



**SENNHEISER**

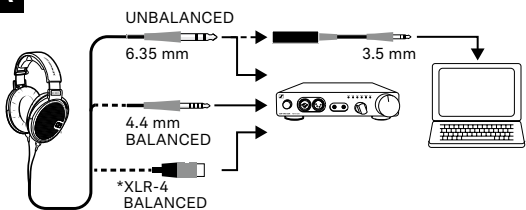
# HD 660S

High-definition  
open-back headphones

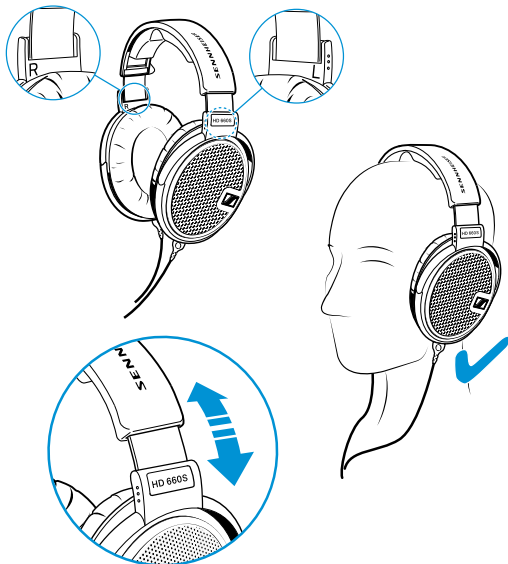


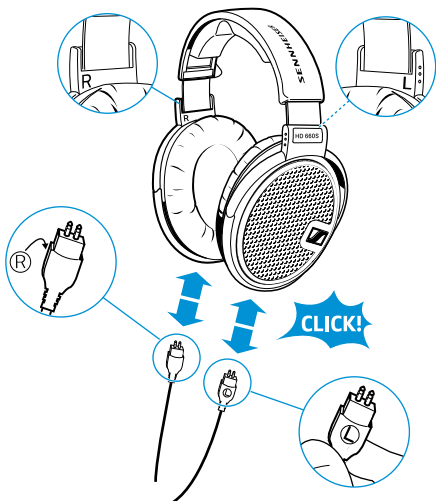
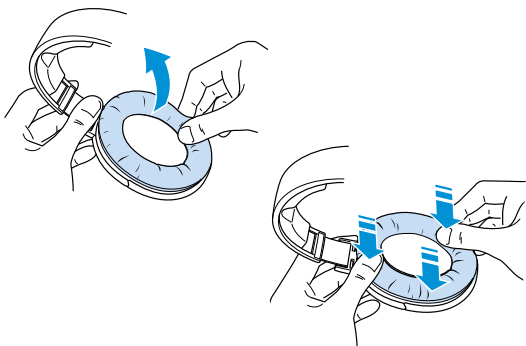
DE Bedienungsanleitung  
EN Instruction manual  
JA 取扱説明書  
FR Notice d'emploi  
ES Instrucciones de manejo  
PT Manual de instruções  
NL Gebruiksaanwijzing  
IT Istruzioni per l'uso  
DA Betjeningsvejledning  
SE Bruksanvisning  
FI Käyttöohje  
EL Οδηγίες λειτουργίας  
PL Instrukcja obsługi  
TR Kullanma kılavuzu  
RU Инструкция по эксплуатации  
ZH 使用说明书

TW 使用說明書  
KO 사용 안내서  
ID Buku petunjuk  
EE Kasutusjuhend  
LV Lietošanas instrukcija  
LT Naudojimo instrukcija  
CS Návod k obsluze  
SK Návod na obsluhu  
HU Használati útmutató  
RO Instrucțiuni de utilizare  
BG Ръководство за експлоатация  
SL Navodila za uporabo  
HR Upute za upotrebu

**A**

\*not included

**B**

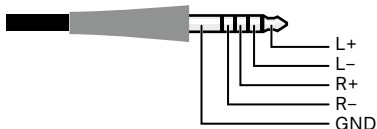
**C****D**

**E**

Pinbelegung / Pin assignment / ピン割り当て /  
Brochage / Asignación de pines /  
Esquema dos pinos / Pinbezetting / Piedinatura /  
Stikbenskonfiguration /  
Kontaktschema / Nastajärjestys / Αντιστοίχιση ακροδεκτών /  
Układ pinów / Pin ataması /  
Распайка выводов / 引脚分配 / 插脚分配 / 핀 할당 /  
Penetapan pin / Pistikutikkude määrangud /  
Kontaktu piešķīre / Kojelių išdėstymas / Zapojení pinů  
/ Obsadenie pinov / Tűskekiosztás / Alocare pini /  
Разположение на изводи / Konfiguracija pin / Raspored pinova

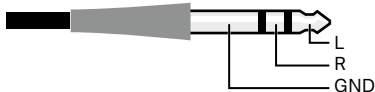
4.4 mm

BALANCED



6.35 mm



UNBALANCED



# Important safety instructions

- ▷ Read this instruction manual carefully and completely before using the product.
- ▷ Always include these safety instructions when passing the product on to third parties.
- ▷ Do not use an obviously defective product.

## Preventing damage to health and accidents

- ▷ Protect your hearing from high volume levels. Permanent hearing damage may occur when headphones are used at high volume levels for long periods of time. Sennheiser headphones sound exceptionally good at low and medium volume levels. 
- ▷ The product generates stronger permanent magnetic fields that could cause interference to cardiac pacemakers, implanted defibrillators (ICDs) and other implants. Always maintain a distance of at least 3.94" (10 cm) between the product component containing the magnet and the cardiac pacemaker, implanted defibrillator or other implant. 
- ▷ Keep the product, accessories and packaging parts out of reach of children and pets to prevent accidents. Swallowing and choking hazard.
- ▷ Do not use the product in an environment that requires your special attention (e.g. in traffic).

## Preventing damage to the product and malfunctions

- ▷ Always keep the product dry and do not expose it to extreme temperatures (hairdryer, heater, extended exposure to sunlight, etc.) to avoid corrosion or deformation.
- ▷ Do not place your headphones on a glass dummy head, chair armrest or similar objects for long periods as this can widen the headband and reduce the contact pressure of the headphones.
- ▷ Use only attachments/accessories/spare parts supplied or recommended by Sennheiser.
- ▷ Clean the product only with a soft, dry cloth.

## Intended use/Liability

These open, dynamic headphones have been designed for home use with high-quality audio systems.

It is considered improper use when the product is used for any application not named in the corresponding product documentation. Sennheiser does not accept liability for damage arising from abuse or misuse of this product and its attachments/accessories. Before putting the product into operation, please observe the respective country-specific regulations.

## Package contents

- |  |                            |
|--|----------------------------|
| 1 HD 660S open, dynamic headphones   | 1 stereo jack adapter      |
| 1 connection cable with 1/4" (6.35 mm) stereo jack plug (connected ex works), unbalanced | (1/4" (6.35 mm) to 3.5 mm) |
| 1 connection cable with 4.4 mm stereo jack plug, balanced                                | 1 instruction manual       |
|  | 1 storage box              |

## Your HD 660S

The HD 660S retains all the virtues of its legendary predecessor, the HD 650, but also represents a decisive step forward technology-wise. Thanks to advanced simulation possibilities, our engineers were able to further optimize the magnet system and the shape of the diaphragm. The new transducers are meticulously measured for each headphones and are hand-selected in pairs. In terms of sound, the HD 660S sets a new benchmark in its class and masters the balancing act between perfect control and fascinating musicality in a playful way. With powerful bass, seductive timbres and breathtaking clarity, the HD 660S lets you experience the pure joy of music. The Sennheiser HD 660S will inspire you.

### A Connecting the headphones\*

- Select the suitable connection cable and, if necessary, an adapter for your audio source to which you want to connect the headphones, and change the connection cable as described in section **C**:
  - 1/4" (6.35 mm) stereo jack plug, unbalanced (can also be connected to a 3.5 mm stereo jack socket by using the supplied adapter)
  - 4.4 mm stereo jack plug, balanced
  - XLR-4, balanced (Sennheiser CH 650 S, optional accessory)
- Connect the headphones to your audio source.

### B Putting on the headphones and using them\*

- Put on your headphones and then pull the ear cups down until they rest comfortably over the ears. Make sure you wear them the right way round by observing the "R" (right) and "L" (left) markings on the ear cup bands.
- For optimum sound quality, ensure that the ear cups are not covered.

### C Changing the connection cable\*

- Make sure the "R" (right) and "L" (left) markings on the connectors match the markings on the ear cups. The marking on the connectors must point outward.
- Insert the connector until it locks into place with an audible click.

---

\* Illustrations can be found on the fold-out pages.

**D Replacing the ear pads\***

For reasons of hygiene, you should replace the ear pads from time to time. Spare parts are available from your Sennheiser partner. To find a Sennheiser partner in your country, search at [www.sennheiser.com](http://www.sennheiser.com).

- ▷ Grasp behind the ear pads and pull them up and away from the ear cups.
- ▷ Place the new ear pads onto the ear cups and attach the ear pads by pressing firmly around them.

**i** The headband padding can be replaced by the Sennheiser repair service. Please contact your Sennheiser partner.

**E Cleaning and storing the headphones\***

- ▷ Clean the product only with a dry and soft cloth.
- ▷ Store the product in a clean, dust-free place, e.g. in its storage box.

## Specifications

Transducer principle	dynamic, open
Frequency response	9 to 41,500 Hz (-10 dB)
Frequency characteristic	diffuse field equalized
Ear coupling	circum-aural
Contact pressure	approx. 6.0 N $\pm$ 1.0 N
Nominal impedance	150 $\Omega$
Sound pressure level at 1 kHz	104 dB at 1 V <sub>rms</sub>
Long-term input power	max. 500 mW as per EN 60-268-7
THD	$\leq$ 0.04% (1 kHz, 100 dB)
Cable	oxygen-free copper cable (OFC), 3 m
Connector (see pin assignment on inside cover page)	stereo jack plug, gold-plated 1/4" (6.35 mm), unbalanced, 3-pin 4.4 mm, balanced, 5-pin
Weight	approx. 260 g (without cable)
Maximum value of the static magnetic field at the surface	2.5 mT
Operating temperature	-10 °C to +55°C

# Manufacturer declarations

## Warranty

Sennheiser electronic GmbH & Co. KG gives a warranty of 24 months on this product.

For the current warranty conditions, please visit our website at [www.sennheiser.com](http://www.sennheiser.com) or contact your Sennheiser partner.

### FOR AUSTRALIA ONLY

Sennheiser's goods come with guarantees that cannot be excluded under the Australian Consumer Law. You are entitled to a replacement or refund for a major failure and compensation for any other reasonably foreseeable loss or damage. You are also entitled to have the goods repaired or replaced if the goods fail to be of acceptable quality and the failure does not amount to a major failure. This warranty is in addition to other rights or remedies under law. Nothing in this warranty excludes, limits or modifies any liability of Sennheiser which is imposed by law, or limits or modifies any remedy available to the consumer which is granted by law.

To make a claim under this warranty, contact: Sennheiser Technical Services and Spare Parts Sales, c/o Linfox, Gate 3, 1 Fox Lane, Erskine Park, 2759, NSW Australia, phone: +61 2 9910 6700 email: [au-service@sennheiser.com](mailto:au-service@sennheiser.com)

All expenses of claiming the warranty will be borne by the person making the claim.

The Sennheiser International Warranty is provided by Sennheiser Australia Pty Ltd (ABN 68 165 388 312), The Zenith, Tower A, L14, 821 Pacific Highway Chatswood NSW 2067, Australia.



## In compliance with the following requirements

### EU declaration of conformity

- RoHS Directive (2011/65/EU)

The full text of the EU declaration of conformity is available at the following internet address: [www.sennheiser.com/download](http://www.sennheiser.com/download).



### Notes on disposal

- WEEE Directive (2012/19/EU)

The symbol of the crossed-out wheeled bin on the product, the battery/rechargeable battery (if applicable) and/or the packaging indicates that these products must not be disposed of with normal household waste, but must be disposed of separately at the end of their operational lifetime. For packaging disposal, please observe the legal regulations on waste segregation applicable in your country.



Further information on the recycling of these products can be obtained from your municipal administration, from the municipal collection points, or from your Sennheiser partner.

The separate collection of waste electrical and electronic equipment, batteries/rechargeable batteries (if applicable) and packagings is used to promote the reuse and recycling and to prevent negative effects caused by e.g. potentially hazardous substances contained in these products. Herewith you make an important contribution to the protection of the environment and public health.